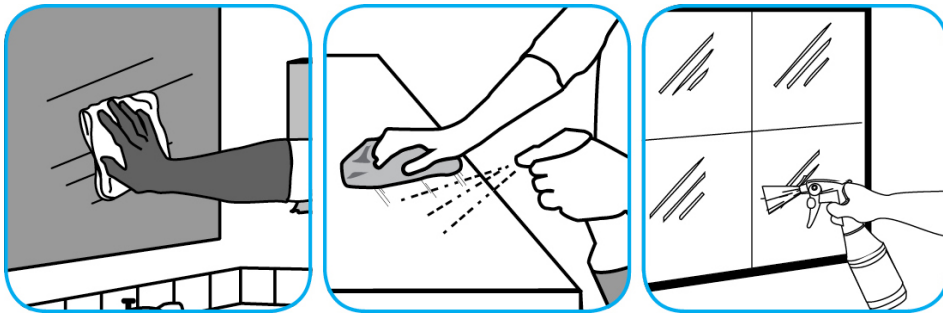


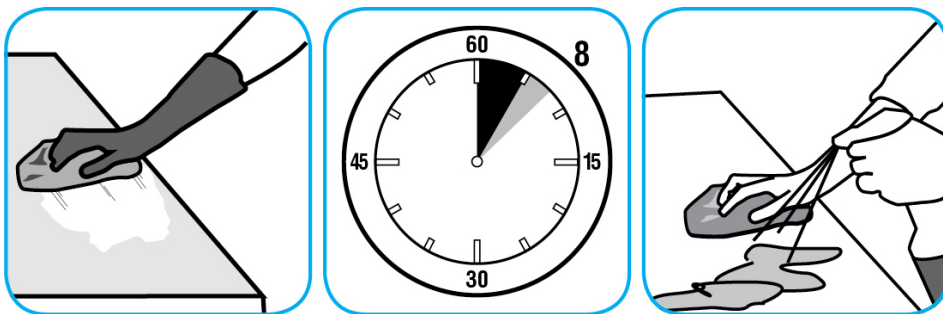
## Application Procedures

**Use Glance® HC Glass and Multi-Surface Cleaner to clean mirror, chrome and glass surfaces.**



Spray onto surface. Wipe with a clean cloth or towel.

**Use Spitfire® SC Power Cleaner to clean most heavily soiled, hard surfaces.**



Spray onto hard surface. Allow to penetrate and lift soils. Wipe with a clean cloth. Requires no rinsing. Do not use on glass, aluminum and water-based paint.

**Use Good Sense® HC Liquid Air Freshener - Fresh to treat malodors on carpet, hard surfaces and as a room spray.**



Spray into the air or onto surfaces where odors are noticeable.

**Use Emerel™/MC Plus Multi-Surface Creme Cleanser for removing stubborn spots, build ups, scuffs, grease, rubber marks and soap scum from common restroom surfaces.**



Apply this product to a damp cloth or directly on surface to be cleaned. Loosen soil with rubbing action and wipe over entire surface. Rinse with water and polish with a dry soft cloth.

## Questions: 1-800-558-2332

Always wear personal protective equipment.