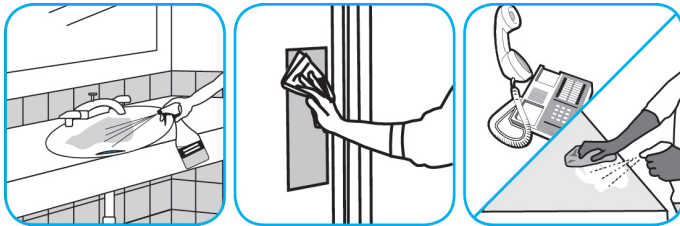


Application Procedures



Use Virex® Plus One-Step Disinfectant Cleaner and Deodorant to clean restroom toilets, sinks, floors and walls.



Apply use-solution to hard, nonporous surfaces. Thoroughly wet surface with a cloth, mop, sponge, sprayer or by immersion. Allow to remain wet for 3 minutes. Wipe dry or allow to air dry.



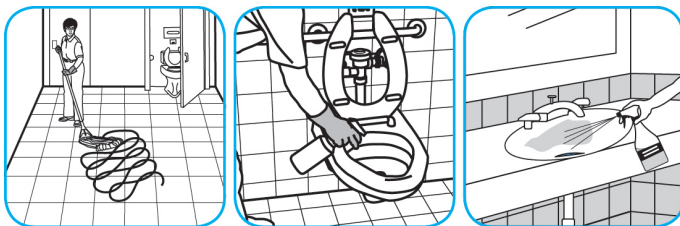
Use EasyWipe for streamlined, effective surface cleaning and disinfection.



Remove bucket lid. Add 16 oz of disinfectant or cleaner solution to an empty EasyWipe System container. Place a new roll of EasyWipe wipes into the container to absorb the solution. After one minute for the initial solution to be absorbed, add an additional 48 oz of selected chemical solution (64 oz total) to container. Feed wipes from center of roll through lid opening. Close lid. Dispense wipe and clean surfaces. If wipe is too wet, squeeze excess on surface to be cleaned. Dispose of visibly soiled wipes. Dispense a new wipe when moving to clean a different surface.



Use Crew® NA SC Non-Acid Bowl and Bathroom Disinfectant Cleaner to clean restroom toilets, sinks, floors and walls.



Apply use-solution to hard, nonporous surfaces. Thoroughly wet surface with a cloth, mop, sponge, sprayer or by immersion. Allow to remain wet for 10 minutes. Wipe dry or allow to air dry.



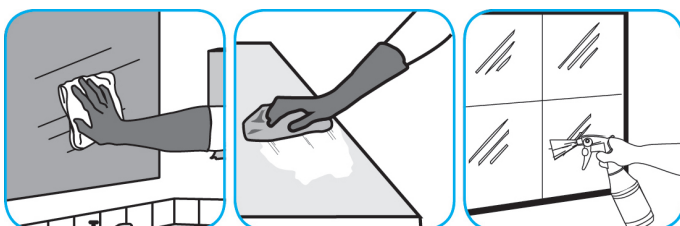
Use Emerel Multi-Surface Creme Cleanser to remove stubborn spots, build-ups, scuffs, grease, rubber marks and soap scum without scratching the surface.



Shake bottle well and squeeze product directly onto surface or on to wet cloth, sponge, or brush. Loosen soil with rubbing action, rinse. For a bright shine, polish with soft dry cloth. Can be used on porcelain, ceramic, stainless steel and other washable surfaces. Do not use on natural wood.



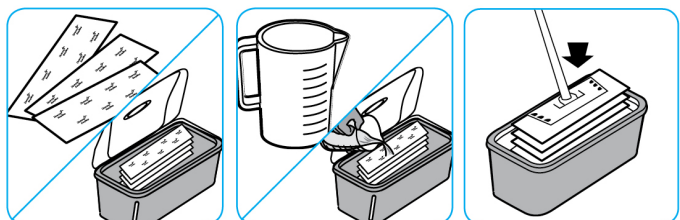
Use Glance® HC Glass and Multi-Surface Cleaner to clean mirrors, chrome and glass surfaces.



Spray onto surface. Wipe with a clean cloth or towel.



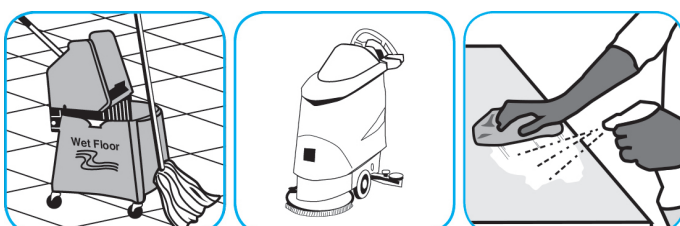
Use EasyMop Single-use Microfiber Mop for a clean tool every time for cleaning on all types of surfaces.



Remove mops from packaging and place them on their side in the mop box. Using measuring jug, dampen dry mops with recommended quantity of cleaning solution. Dosing instructions to pre-wet mops: 110 mL per 40 cm mop, 25 mops 88 oz. (0.69 gallons). Attach the mop to the mop head and commence cleaning.



Use Prominence™/MC Heavy Duty Cleaner to remove soil from floors without dulling the appearance of the floor finish.



Dilute with cold water. For daily cleaning, use a spray bottle, mop and bucket or fill auto scrubber and use red pads. For Deep Scrubbing, fill auto scrubber and use green or blue pads. Pick up soil and excess cleaner with a tightly wrung out cleaning mop or cloth.

Questions: 1-800-558-2332

Always wear personal protective equipment.