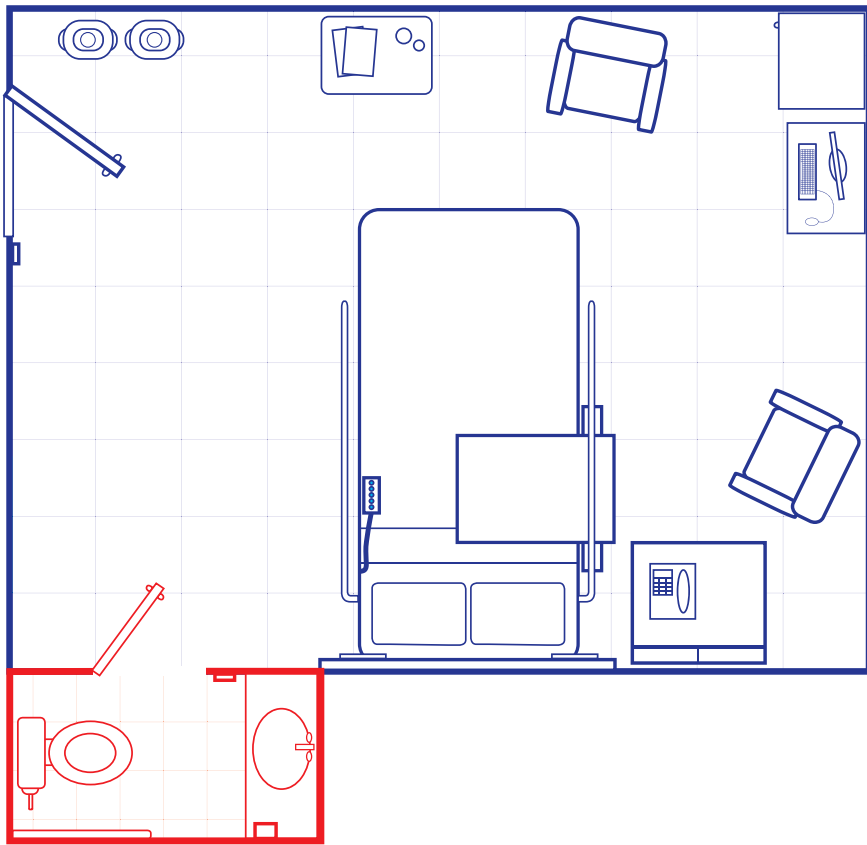


Patient Room: Discharge Cleaning



Getting Started

- 1** Gather supplies.
- 2** Conduct hand hygiene, put on PPE.
- 3** Place "Wet Floor" sign at the room entrance.
- 4** Inspect the room and report any issues.
- 5** Patient's Personal Belongings - If present, have nursing staff remove.
- 6** Remove trash and infectious waste.
- 7** Remove all linens and place in soiled linen liner change out privacy curtains per facility policy.
- 8** Check sharps container - if over 2/3 full, call to have container replaced.
- 9** High dust horizontal surfaces and fixtures.
- 10** Spot clean visible soil from low touch surfaces such as walls.

Clean and Disinfectant Patient Room Surfaces

Entry Areas

- 1** PPE Holder
- 2** Soap/Sanitizer dispenser
- 3** Door knob

Patient Area

- 1** Gather cleaning wipe moistened with disinfectant; As the wipe becomes soiled, exchange it for a new wipe
- 2** Light switch
- 3** Sharps containers (exterior)
- 4** Nurse server
- 5** Computer monitor, mouse, keyboard and cart
- 6** Patient and Visitor chairs
- 7** Bedside table, inside drawer and drawer pulls
- 8** Telephone and over bed tray table
- 9** Call button/ TV remote
- 10** Patient Bed - including bed frame, headboard, foot board and all sides of the mattress
- 11** Patient Bed Rails and Controls
- 12** Headwall, Cords and Brackets
- 13** Patient room closet
- 14** Clean trash and medical waste containers inside and out
- 15** Clean commode, contact nursing before cleaning
- 16** Remove gloves and conduct hand hygiene

Restroom Area

- 1** Spray privacy curtain grab area and any visibly soiled areas
- 2** Spray toilet bowl, seat and wall area with disinfectant; let dwell
- 3** Gather cleaning wipe moistened with disinfectant; As the wipe becomes soiled, exchange it for a new wipe
- 4** Restroom door and handles - inside and out
- 5** Light switch
- 6** Sink, faucets, and handles
- 7** Soap/sanitizer dispenser
- 8** Shower area
- 9** Toilet grab handles/bar
- 10** Pull cord and pull ring
- 11** Wall area around toilet
- 12** Toilet Flush Handle
- 13** Bed pan sprayer
- 14** Toilet seat and bowl
- 15** Remove gloves, conduct hand hygiene, put on new gloves

Finishing Area

- 1** Change restroom paper and hand hygiene products.
- 2** Make bed with clean linens.
- 3** Refill hand hygiene dispensers.
- 4** Rearrange furniture.
- 5** Inspect your work.
- 6** Mop floors.
- 7** Remove gloves and conduct hand hygiene.

