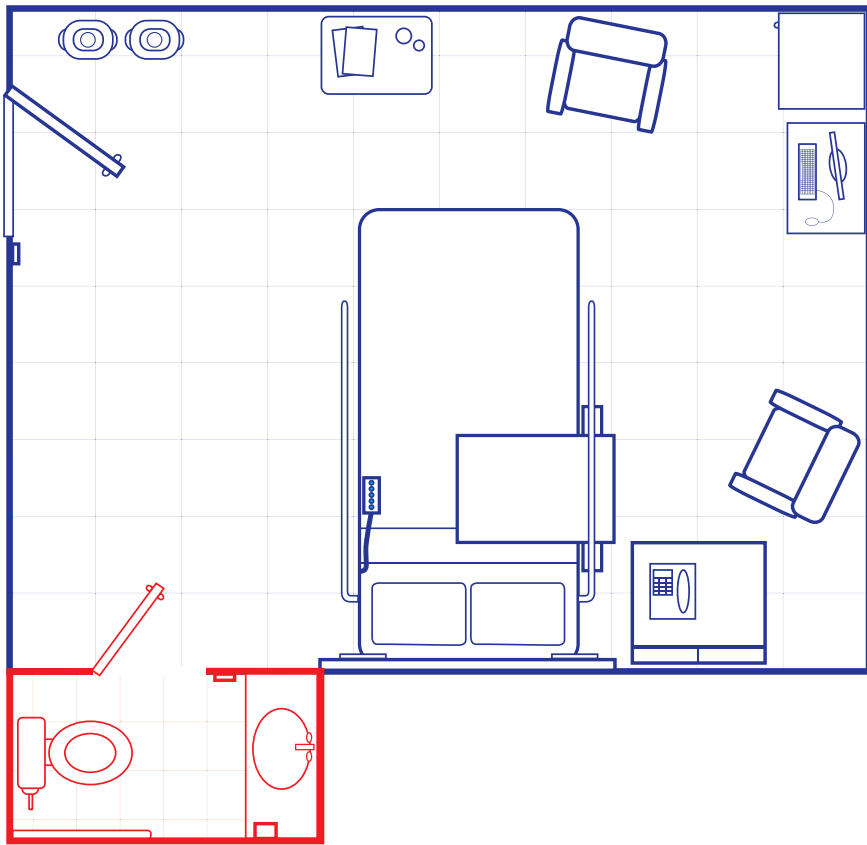


Patient Room: Daily Cleaning



Getting Started

- 1** Gather supplies.
- 2** Conduct hand hygiene, put on PPE.
- 3** Place wet floor sign at the room entrance.
- 4** Inspect the room and report any issues.
- 5** Patient's Personal Belongings - If present, have nursing staff remove.
- 6** Remove trash and infectious waste.
- 7** Remove all linens and place in soiled linen liner change out privacy curtains per facility policy.
- 8** Check sharps container - if over 2/3 full, call to have container replaced.
- 9** High dust horizontal surfaces and fixtures.
- 10** Spot clean visible soil from low touch surfaces such as walls.

Clean and Disinfectant Patient Room Surfaces

Entry Areas

- 1** Gather cleaning wipe moistened with disinfectant; As the wipe becomes soiled, exchange it for a new wipe
- 1** PPE Holder
- 2** Soap/Sanitizer dispenser
- 3** Door knob

Patient Area

- 1** Light switch
- 2** Sharps containers (exterior)
- 3** Nurse server
- 4** Computer monitor, mouse, keyboard and cart
- 5** Patient and Visitor chairs
- 6** Bedside table, inside drawer and drawer pulls
- 7** Telephone
- 8** Over bed tray table; do not disturb patient's belongings
- 9** Call button/ TV remote
- 10** Patient bed rails and controls
- 11** IV pole grab area, do not disturb any medication
- 12** Patient room closet (exterior and door pulls)
- 13** Trash and infectious waste receptacles - clean inside and out and reline

Restroom Area

- 1** Gather cleaning cloth moistened with disinfectant; As the cloth becomes soiled, exchange it for a new cloth
- 2** Spray toilet bowl, seat and wall area with disinfectant; let dwell
- 3** Restroom door and handles - inside and out
- 4** Light switch
- 5** Sink, faucets, and handles
- 6** Soap/sanitizer dispenser
- 7** Shower area
- 8** Toilet grab handles/bar
- 9** Pull cord
- 10** Wall area around toilet
- 11** Toilet Flush Handle
- 12** Bed pan sprayer
- 13** Toilet seat and bowl
- 14** Clean commode, contact nursing before cleaning
- 15** Remove gloves, conduct hand hygiene, put on new gloves

Finishing Area

- 1** Refill tissue and towel dispensers
- 2** Refill hand hygiene dispensers
- 3** Rearrange furniture and equipment as required
- 4** Inspect your work
- 5** Mop floors
- 6** Remove gloves and conduct hand hygiene

