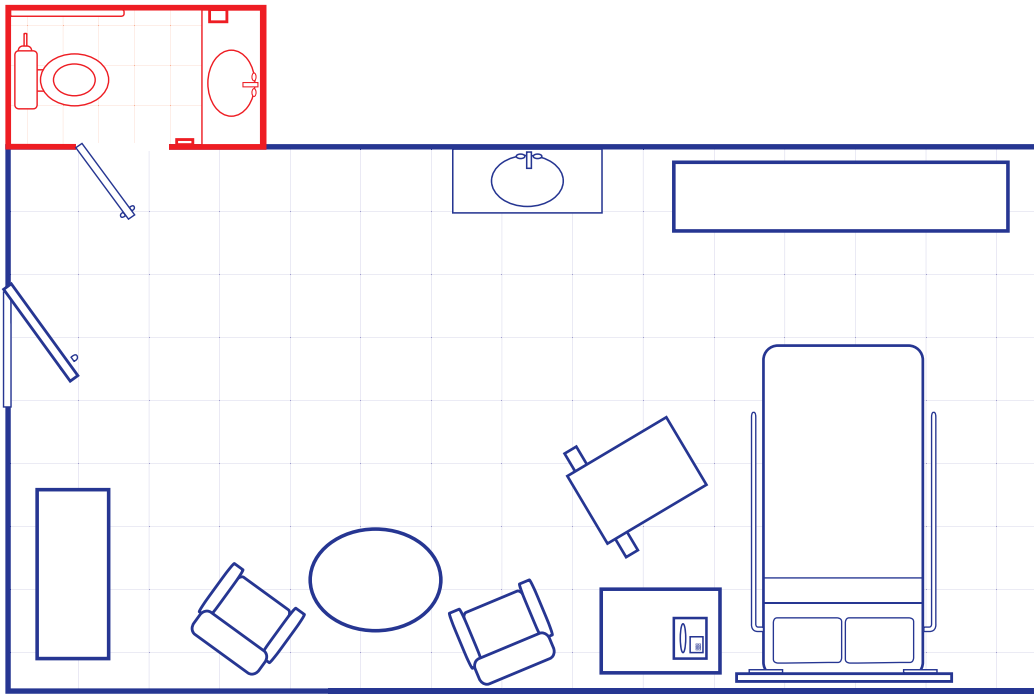


Resident Room: Daily Cleaning



Getting Started



1 Gather supplies. Ensure cart is loaded properly.



2 Conduct hand hygiene, don gloves. Put on additional PPE as required (goggles).



3 Place wet floor sign at room entrance.



4 Remove trash and infectious waste.



5 Remove all linens and place in soiled linen liner.



6 Report any room issues.

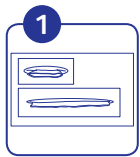


7 High dust horizontal surfaces and fixtures.

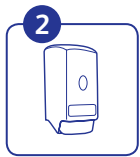


8 Spot clean visible soil from low touch surfaces.

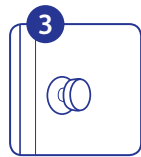
Entry Areas



1 PPE Holder

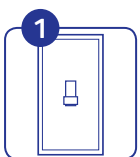


2 Soap/Sanitizer dispenser



3 Door knob

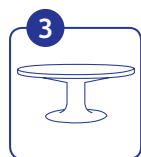
Resident Area



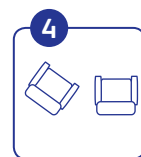
1 Light switch



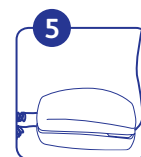
2 Sharps containers



3 Table top



4 Chairs



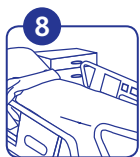
5 Telephone



6 Overbed table



7 Call button/remote



8 Patient bed and bed rails



9 Bed control buttons

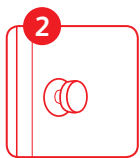


10 Headwall, cords and brackets

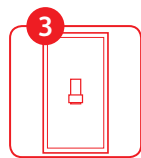
Restroom Area



1 Spray toilet area



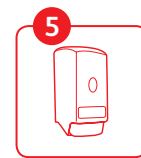
2 Door knob



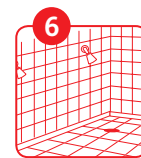
3 Light switch



4 Sink faucet and handles



5 Soap/Sanitizer dispenser



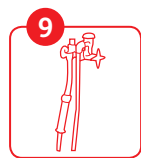
6 Shower area



7 Toilet grab handles/bars



8 Wall area around toilet



9 Bed pan sprayer



10 Toilet seat and bowl

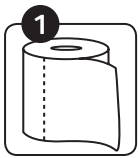


11 Clean commode, contact nursing before cleaning.

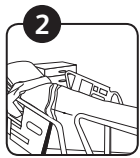


12 Remove gloves and conduct hand hygiene.

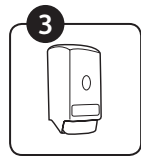
Finishing Area



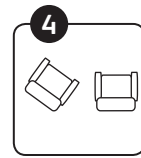
1 Change restroom paper and hand hygiene products.



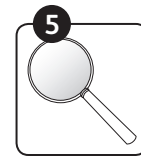
2 Make bed with clean linens.



3 Refill hand hygiene dispensers.



4 Rearrange furniture.



5 Inspect your work.



6 Mop floors.



7 Remove gloves and conduct hand hygiene.