

## RTD® Application Procedures

### Use Pro Strip™ SC High Efficiency Floor Stripper to remove existing floor finish.



Blockade areas to be stripped. Floors will become very slippery when stripper is applied. Exercise caution.

### Use Revive® Plus SC Maintainer/Rejuvenator daily to clean/maintain floors.



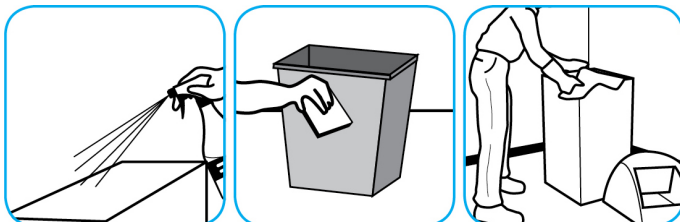
Fill mop bucket or autoscrubber from dispenser. Apply with mop or scrub floor with red pad or equivalent. Trail mop behind scrubber. Do not rinse the floor. Let floor dry completely.

### Heavy Duty Prespray Plus is a pH neutral cleaner for prespraying to loosen heavily soiled carpets.



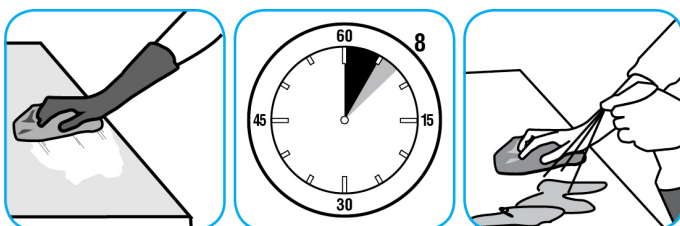
Vacuum area first. Spray carpet and agitate with a carpet rake, extractor brush, shampoo brush or bonnet. Extract and allow to dry.

### Use Speedball® 2000 Heavy-Duty Spray Cleaner Concentrate #32 to clean hard surfaces but not glass, aluminum, or water based paint.



Spray product on hard surfaces to be cleaned. Allow cleaner to penetrate and lift soils. Wipe with a clean cloth. Requires no rinsing.

### Use Spitfire® SC Power Cleaner to clean most heavily soiled, hard surfaces.



Spray onto hard surface. Allow to penetrate and lift soils. Wipe with a clean cloth. Requires no rinsing. Do not use on glass, aluminum and water-based paint.

### Use Oxivir® Five 16 Concentrate One Step Disinfectant Cleaner to clean and disinfect hard, non-porous surfaces.



Apply use solution. Let stand for 5 minutes. Wipe or allow to air dry.

## Questions: 1-800-558-2332

Always wear personal protective equipment.