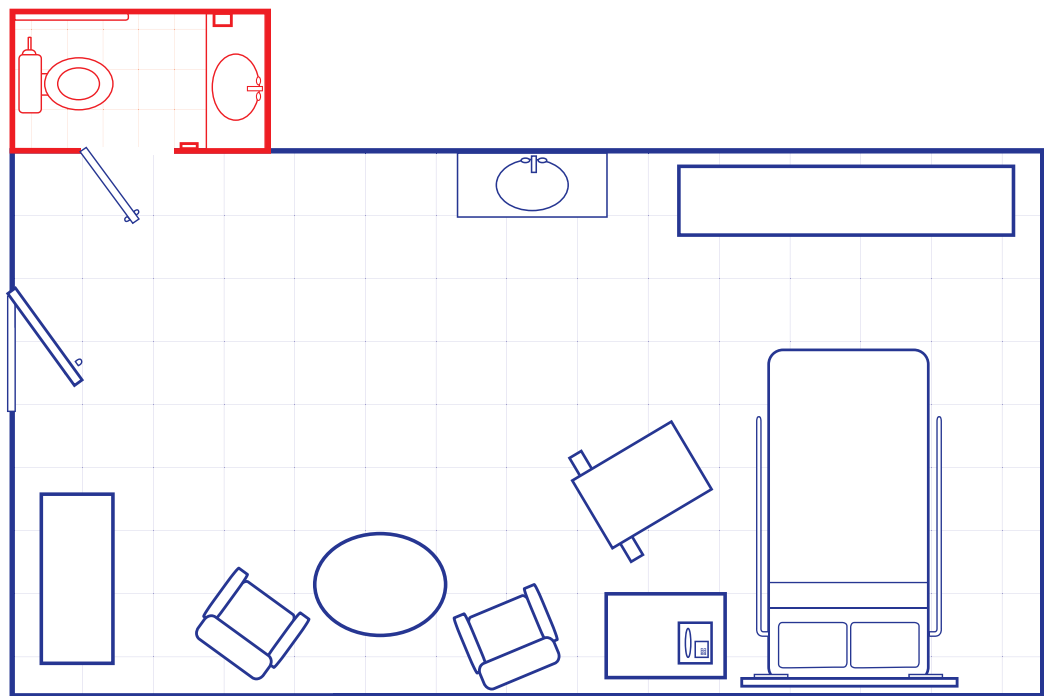


# Resident Room: Daily Cleaning



## Getting Started

- 1

Gather supplies. Ensure cart is loaded properly.
- 2

Conduct hand hygiene, don gloves. Put on additional PPE as required (goggles).
- 3

Place wet floor sign at room entrance.
- 4

Remove trash and infectious waste.
- 5

Remove all linens and place in soiled linen liner.
- 6

Report any room issues.
- 7

High dust horizontal surfaces and fixtures.
- 8

Spot clean visible soil from low touch surfaces.

## Entry Areas

- 1

PPE Holder
- 2

Soap/Sanitizer dispenser
- 3

Door knob

## Resident Area

- 1

Light switch
- 2

Sharps containers
- 3

Table top
- 4

Chairs
- 5

Telephone
- 6

Overbed table
- 7

Call button/remote
- 8

Patient bed and bed rails
- 9

Bed control buttons
- 10

Headwall, cords and brackets

## Restroom Area

- 1

Spray toilet area
- 2

Door knob
- 3

Light switch
- 4

Sink faucet and handles
- 5

Soap/Sanitizer dispenser
- 6

Shower area
- 7

Toilet grab handles/bars
- 8

Wall area around toilet
- 9

Bed pan sprayer
- 10

Toilet seat and bowl
- 11

Clean commode, contact nursing before cleaning.
- 12

Remove gloves and conduct hand hygiene.

## Finishing Area

- 1

Change restroom paper and hand hygiene products.
- 2

Make bed with clean linens.
- 3

Refill hand hygiene dispensers.
- 4

Rearrange furniture.
- 5

Inspect your work.
- 6

Mop floors.
- 7

Remove gloves and conduct hand hygiene.